

NHIOICD-215 / NHIOICD-220 / NHIOICD-225 NHIOICDCP-215 / NHIOICDCP-220 / NHIOICDCP-225

2" Iolite IC Air-Tight High Lumen New Construction Housing

Source: 20W to 28W LED
1500lm to 2500lm

Type	
Project	
Catalog No.	
Notes	

PRODUCT DESCRIPTION

New construction housing for use in insulated ceilings can be in direct contact with insulation. Air-tight construction provides energy savings by reducing the flow of air through the ceiling. Patented design allows for easy, tool-less removal of the driver.

SPECIFICATION

Housing: 0.040" Aluminum housing can be installed in 1/2" ceiling thickness, an extension collar ([NIO-2EXTC2](#)) is available for ceiling thickness up to 2".

Patented Driver Assembly: Allows driver to slide out of housing without tools from the room side. Housing includes a removable top cover for driver maintenance above the ceiling.

Air Flow Restriction: Meets requirements of Air-Tight (AT) <2CFM (cubic feet per minute) in accordance with ASTM-283 Air-Tight requirements.

Clearance: "IC" Insulated ceiling housings are direct contact rated. Not to be used in direct contact with spray foam insulation.

Bar Hangers: Two 13-3/4" to 24-1/2" adjustable bar hangers with captive nails are included on housing. Bar hanger brackets are parallel to junction box, but can be repositioned 90° perpendicular to junction box if desired. "L"-shaped bar hanger foot to align to bottom of construction joist. A T-bar notch allows for easy installation in a suspended ceiling.

Junction Box: Pre-wired 25 cubic inch 0.064" thick galvanized steel, with seven 1/2" knockouts, four Romex® pryouts, and snap on covers. All leads are #18AWG wire, the ground wire is connected to the bottom, and quick connectors are supplied on all leads. Maximum of 8 no. 12 AWG through branch circuit conductors suitable for at least 90°C permitted in junction box. Junction box is accessible from the room side through housing opening.

ELECTRICAL

	215LE4	215LUPE0	220LE4	225LE4
Input Voltage	120/277V			
Input Power	20W	20W	24W	28W
Power Factor	≥0.90			
Dimming	Triac / ELV / 0-10V	Lutron EcoSystem	Triac / ELV / 0-10V	
Operating Temp.	40°C max.	25°C max.	30°C max.	25°C max.

COMPATIBLE TRIMS

CATALOG NO.	DESCRIPTION
NIOB-2RC	2" Round Adjustable Cone Regress
NIOB-2SC	2" Square Adjustable Cone Regress
NIOB-2RG	2" Round Adjustable Surface Gimbal
NIOB-2SG	2" Square Adjustable Surface Gimbal
NIOB-2RND	2" Round Deep Reflector
NIOB-2SND	2" Square Deep Reflector
NIOB-2RPH	2" Round Pinhole
NIOB-2RPHA	2" Round Adjustable Pinhole
NIOB-2RSL	2" Round Adjustable Slot Aperture
NIOB-2RNB	2" Round Bullnose
NIOB-2SNB	2" Square Bullnose
NIOB-2SNSQ	2" Square Reflector / Square Aperture

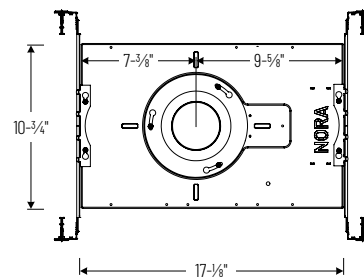
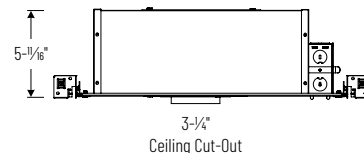
Emergency: Housing can be specified with connections for emergency battery installation. Requires access above ceiling. Must specify battery with remote test switch separately ([NEPK-07LEDUNV](#)). *Note: Emergency is not compatible with chicago plenum housings.*

LABELS AND LISTINGS

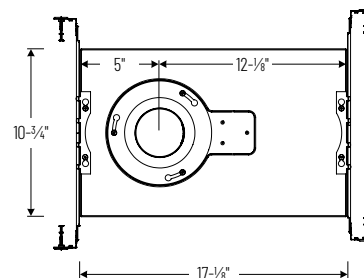
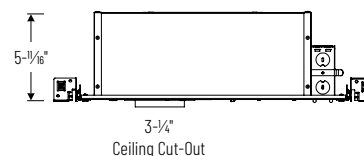
- cULus Listed for Damp Locations (Wet Locations when used with compatible trim)
- ENERGY STAR certified
- [5-Year Limited Warranty](#)
- RoHS Compliant
- FCC compliant
- Patent #D824567S
- Meets or exceeds ASTM-283 Air-Tight requirements



PRODUCT IMAGES AND DIMENSIONS



**NHIOICD-215 / NHIOICDCP-215
NHIOICD-225 / NHIOICDCP-225**



NHIOICD-220 / NHIOICDCP-220

2" Iolite ICAT High Lumen New Construction Housing - Compatible with NIOB-2 & NIO-2 trims

Housing Type / Lumens / Wattage	Driver / Dimming	Optional Emergency
NHIOICD-215 = IC Air-Tight, 1500lm / 20W NHIOICDCP-215 = Chicago Plenum, 1500lm / 20W	LE4 = 120/277V input; Triac / ELV / 0-10V dimming LUPE0 = 120/277V input; Lutron Hi-Lume Premier 0.1% EcoSystem with Soft-On, Fade-to-Black (consult factory)	/PEM = Pre-Wired for Remote Emergency (not compatible with NHIOICDCP)
NHIOICD-220 = IC Air-Tight, 2000lm / 24W NHIOICDCP-220 = Chicago Plenum, 2000lm / 24W NHIOICD-225 = IC Air-Tight, 2500lm / 28W NHIOICDCP-225 = Chicago Plenum, 2500lm / 28W	LE4 = 120/277V input; Triac / ELV / 0-10V dimming	/PEM = Pre-Wired for Remote Emergency (not compatible with NHIOICDCP)

Optional Accessories

Description
NEPK-07LEDUNV = Remote Emergency Battery w/Test Switch
NIO-2EXTC2 = Ceiling Extension Collar up to 2"

Example: **NHIOICD-220LE4** = 2" Iolite ICAT High Lumen New Construction Housing, 2000lm / 24W, 120-277V input; Triac / ELV / 0-10V dimming